

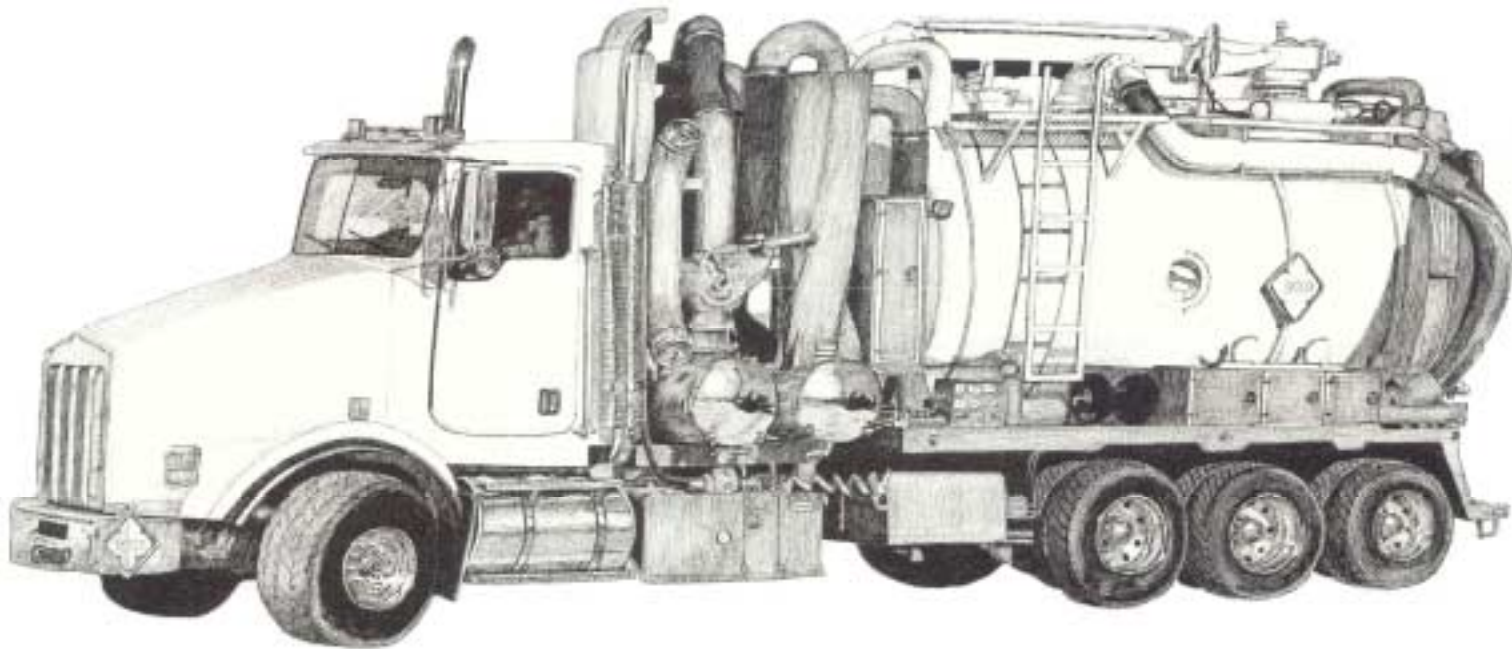


**L.M.**  
**INDUSTRIES**



# PARTS CATALOGUE

**Serving the Vac  
Truck Industry with  
Sales & Service**



**[www.lmindustries.ca](http://www.lmindustries.ca)**

**The oil & gas industry has gone through dramatic changes over the years. Our niche in that industry, vacuum & water trucks, has especially seen exceptional changes. At L.M. Industries, we have remained current with the market, enabling us to provide our customers with the most up to date technology. Keeping pace with the ever changing market includes the products we stock, the design of our manufacturing, & the effort we put into having the latest tools & innovations for a dependable service department.**

**Throughout this catalogue you will see a sampling of the over 3000 different parts in our inventory. You will also gain some understanding of our unique combination of manufacturing proficiency, service department knowledge & ability, and a warehouse of products which we are distributors for. This unique combination is all specifically geared for your market, vacuum & water trucks. Trust your vacuum & water truck needs to the ones who have specialized in that industry since 1996, L.M. Industries.**

**L.M. Industries**

**4412-50 Avenue (Street)**

**Box 1029 (Mailing)**

**Calmar, AB T0C-0V0**


**Ph. (780)985-8591**

**Fax (780)985-2547**

**[www.lmindustries.ca](http://www.lmindustries.ca)**

## Table of Contents

<b>Preamble</b>	<b>Page 3</b>
<b>Table of Contents</b>	<b>Page 5</b>
<b>Introduction</b>	<b>Page 7</b>
<b>Vacuum Pumps &amp; Blowers:</b>	<b>Page 9-10</b>
Fruitland	
Wallenstein	
Moro	
Hibon	
Robuschi	
<b>Pump Accessories</b>	<b>Page 11</b>
<b>Schematics of Most Popular Vane Pumps</b>	<b>Page 12-14</b>
<b>Rebuild Kits</b>	<b>Page 15</b>
<b>Silencers</b>	<b>Page 15</b>
<b>Product Pumps:</b>	<b>Page 16-17</b>
Bowie	
<b>Valves:</b>	<b>Page 18-19</b>
Check Valves	
Ball Valves	
Butterfly Valves	
Lever Valves	
Piston Valves	
Vacuum & Pressure Relief Valves	
Four-way Valves	
Pneumatic Cylinders (For air operated valves)	
Foot Valves	
<b>Hydraulics:</b>	<b>Page 20</b>
Motors	
Pumps	
Hose	
Fittings	
Hydraulic Accessories	
Hydraulic Cylinders	
Flow Control Valves	
<b>Camlocks</b>	<b>Page 21</b>
<b>Pipe Fittings</b>	<b>Page 21</b>
<b>Grooved Piping Products</b>	<b>Page 21</b>
<b>Truck Accessories:</b>	<b>Page 22</b>
Ball Seats	
Float Balls	
Door Seals	
Portal Gaskets	
Flanges	
Heat Collars	
Pin-Wheel Assemblies	
Float Arm Assemblies	
Sight Eyes	
Oil Catch Mufflers	
Ball Cage Assemblies	
<b>Shutoffs</b>	<b>Page 23</b>
<b>Manways</b>	<b>Page 23</b>
<b>Clamps</b>	<b>Page 23</b>
<b>PTO's</b>	<b>Page 24</b>
<b>Baldor Electric Motors</b>	<b>Page 24</b>
<b>Gas Detection</b>	<b>Page 24</b>
<b>Cyclones</b>	<b>Page 25</b>
<b>Vibrators</b>	<b>Page 25</b>
<b>Final Filters</b>	<b>Page 26</b>
<b>Final Filter Housings</b>	<b>Page 26</b>
<b>Composite, Petroleum, &amp; Liquid Suction Hose</b>	<b>Page 27</b>
<b>Skid-Mounted Vac Units</b>	<b>Page 28</b>
<b>Concluding Note</b>	<b>Page 29</b>
<b>Personal Notes</b>	<b>Page 30-32</b>



**Service. Sales. Manufacturing. Whatever your requirements for the vacuum & water truck industry, we can provide. We have specialized in the vacuum & water truck industry since 1996. These trucks are made up of components from the world over. We have set up a supply chain that brings these components into our inventory from Italy, France, Eurasia, United States; ready for you in Western Canada when you need them. With available inventory & a staff of industry trained journeymen personnel, we can provide any part you need on your truck & provide after sale service. Keep your truck working for you by utilizing the experience and inventory of L.M. Industries.**





# Pumps & Blowers

## Fruitland



Model	CFM Free Air Capacity	RPM Max	HP required @ Max Pressure	
			BHP	
RCF 500	380	1400	44	
RCF 800	420	1000	55	
RCF 1200	645	1000	85	

**Fruitland Vacuum Pumps are designed for durability and simple maintenance. We can supply all models to meet your requirements.**

## Moro



Model	CFM Free Air Capacity	RPM Max	HP required @ Max Pressure	
			BHP	
M3	176	1100	7.8	
M9	547	1000	46.0	
M10	230	1100	24.0	
M15	830	1250	77.5	
PM80	350	1100	35.0	
PM100	460	1500	17.0	
PM200	677	1250	61.0	

**Moro pumps have a tradition of reliability, durability and versatility. We supply all models.**

## Wallenstein



Model	CFM Free Air Capacity	RPM Max	HP required @ Max Pressure	
			BHP	
302	165	1150	13	
403	220	1150	18	
553	300	1150	25	
753	385	1150	32	
1050	550	1000	47	

**From the small sanitation pumps to the large industrial units, Wally pumps are easily maintained and serviced.**



## Robuschi

Model	CFM	RPM	HP required @ Max Pressure	
	Free Air Capacity		Max	BHP
RB-DV-65	950	4800		58
RB-DV-85	1650	3800		99
RB-DV-105	2700	3250		135
RB-DV-125	3800	2600		214
RB-DV-145	6400	2000		325

Now available to the Canadian market is the Italian made Robuschi blower. We have certified Robuschi mechanics on staff to install and service this product. With the air injection positioned at 45 degrees, the decibel level of this blower is significantly reduced.



Model	CFM	RPM	HP required @ Max Pressure	
	Free Air Capacity		Max	BHP
VTB 810	900	3300		55
VTB 820	1500	3600		88
SIAV 822	2750	3000		150
SIAV 840	3720	2600		225
SIAV 8702	5250	2000		300

## Hibon

Hibon blowers are made in France. They have been the primary choice for powering vacuum trucks in Western Canada for over a decade. Certified Hibon mechanics on staff to keep your truck operating



*Note: Above specs are from a sampling of blowers & pumps we carry, we have many more available.*



# Pump Accessories

## Pump Gaskets



Get the proper seal on your pump to keep it operating to its peak performance.

The power of your hydraulic system needs to be transformed into vacuum power. We carry a variety of power transmission products.



## Power Transmission Products

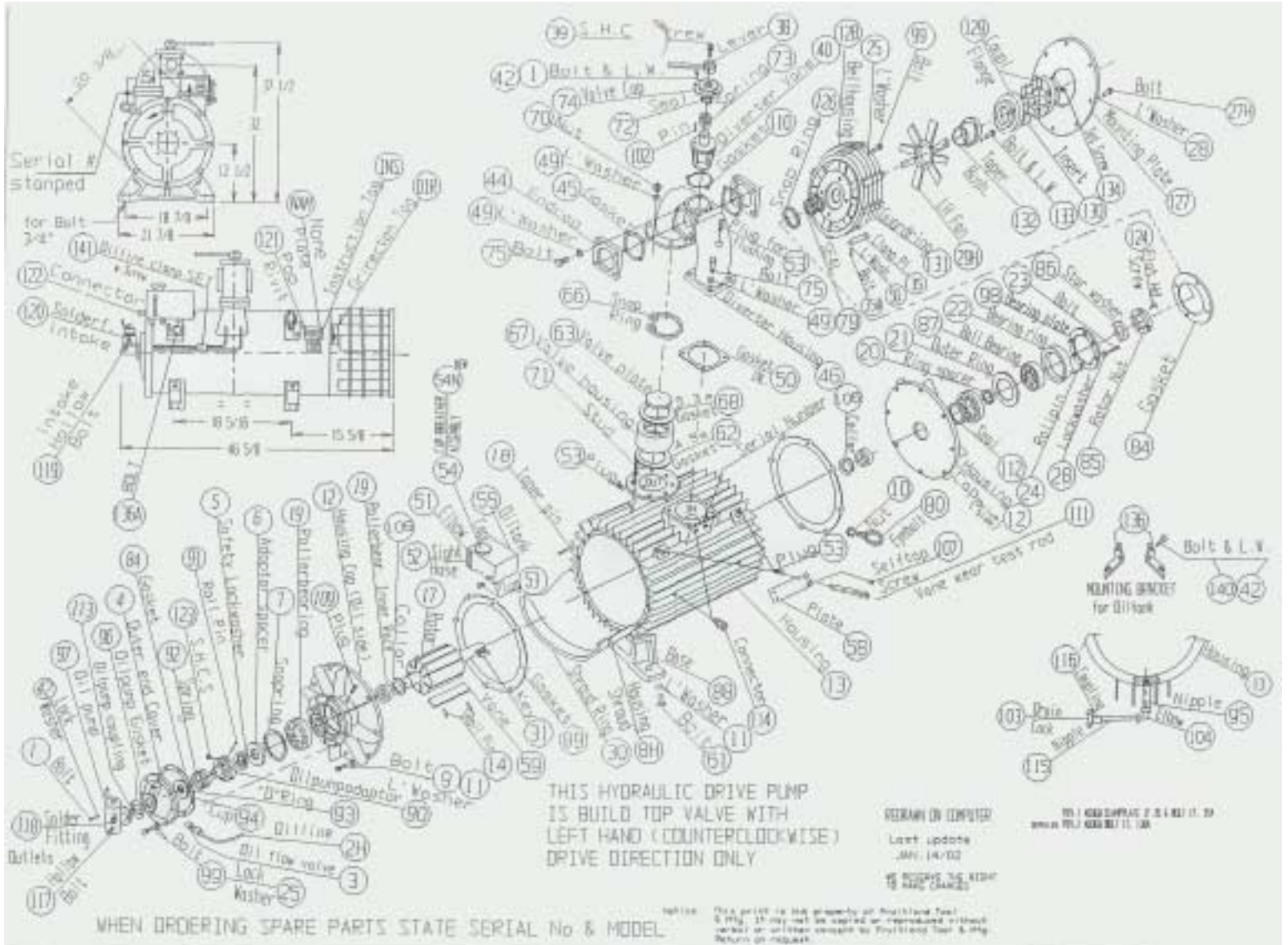


## Gauges

Your vacuum gauge informs you how efficiently your pump is operating. Keep an accurate measure of your vacuum and pressure readings by keeping your gauge new.



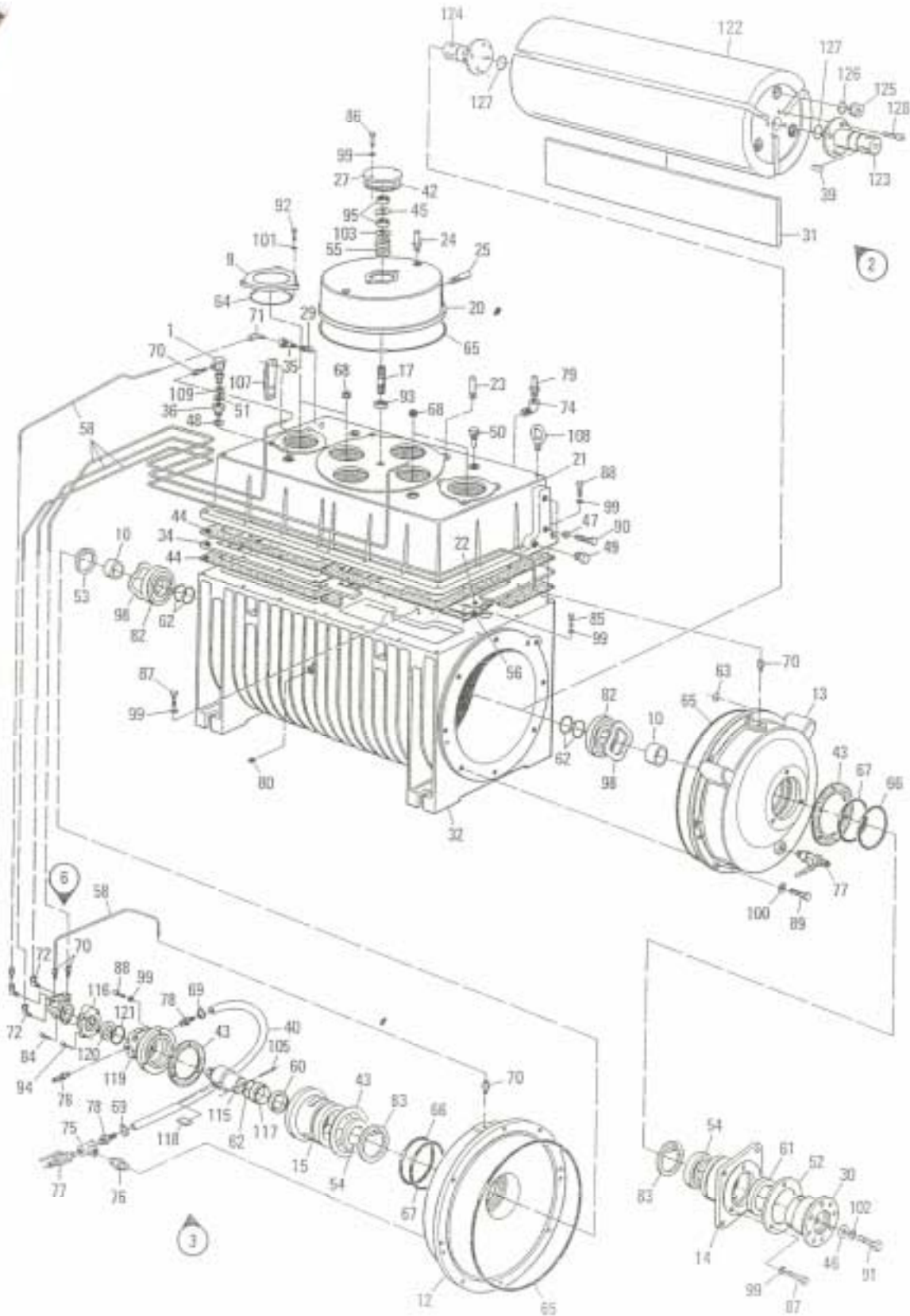
# Schematic Of RCF 1200 LUH





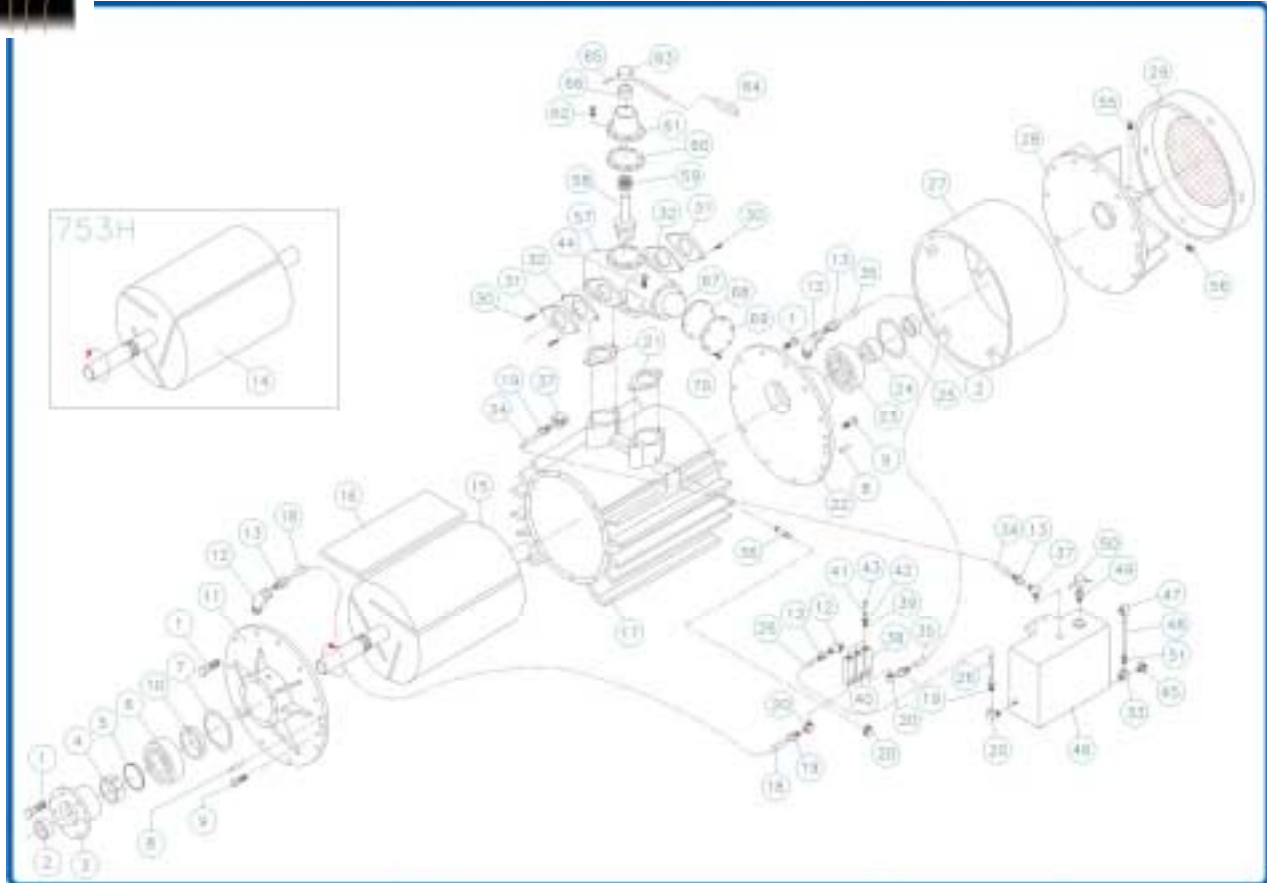


# Schematic Of PM 200





# Schematic of Wally 753

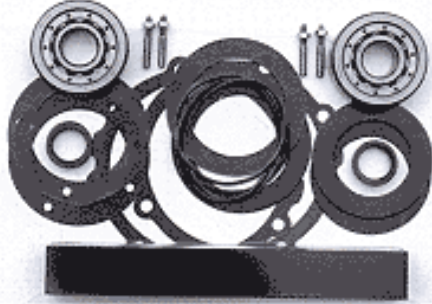


ITEM	DESCRIPTION	PART#	QTY	ITEM	DESCRIPTION	PART#	QTY	ITEM	DESCRIPTION	PART#	QTY
1	CAP SCREW 1/4"x1"	1000-001	30	24	BEARING RACE	3020-009	1	47	BARB FITTING	1000-069	1
2	OIL SEAL	3020-010	2	25	RETAINING RING	3020-012	1	48	SIGHT TUBE	2000-151	1
3	BEARING CAP	3020-023	1	26	OIL FEED LINE	1000-501	1	49	FILLER PORT	1000-410	1
4	LOCKNUT	3020-022	1	27	FAN SHROUD	3020-013	1	50	FILLER CAP	1000-411	1
5	LOCKWASHER	3020-021	1	28	FAN	3020-025	1	51	BARB FITTING	1000-068	1
6	BALL BEARING	3020-020	1	29	FAN SHROUD COVER	3020-014	1	55	SET SCREW 1/4"x1/2"	1000-228	1
7	RETAINING RING	3020-019	1	30	CAP SCREW 1/2"x1-1/2"	1000-253	4	56	SET SCREW 1/4"x1/4"	1000-229	1
8	TAPER PIN	1000-003	4	31	VALVE FLANGE	1000-126	2	57	VALVE HOUSING	1000-124	1
9	CAP SCREW 1/4"x1/2"	1000-002	4	32	FLANGE GASKET	1000-125	2	58	VALVE SPOOL	1000-130	1
10	SPACER RING	3020-018	1	33	STREET TEE	1000-282	1	59	SPRING	1000-132	1
11	ENDPLATE (DRIVE)	3020-011	1	34	OIL LINE-PRESSURE	1000-525	1	60	TOP COVER GASKET	1000-131	1
12	OIL LINE FITTING	1000-407	3	35	OIL LINE-REAR BEARING	1000-523	1	61	VALVE TOP COVER	1000-133	1
13	BARB FITTING (SWWEL)	1000-004	4	36	NIPPLE	1000-240	1	62	CAP SCREW 1/4"x3/4"	1000-254	6
14	ROTOR - H(CDW)	7500-007	1	37	OIL LINE FITTING	1000-403	2	63	HANDLE	1000-136	1
15	ROTOR - HR(CW)	7500-008	1	38	SIGHT FEED VALVE ASSY (3)	1000-214	1	64	HANDLE GRIP	1000-138	1
16	VANE	7500-010	3	39	SIGHT FEED GASKET	1000-432	6	65	HANDLE PIN	1000-137	1
17	HOUSING	7500-005	1	40	SIGHT FEED GLASS	1000-357	3	66	SEAL	1000-135	1
18	OIL LINE FRONT BEARING	1000-524	1	41	SIGHT FEED O-RING	1000-449	3	67	CHECK BALL	1000-127	1
19	BARB FITTING	1000-402	4	42	SIGHT FEED NUT	1000-450	3	68	GASKET	1000-128	1
20	ELBOW	1000-223	4	43	SIGHT FEED NEEDLE	1000-320	3	69	COVER PLATE	1000-129	1
21	GASKET	1000-056	2	44	CAP SCREW 1/2"x1"	1000-252	4	70	MACHINE SCREW	1000-041	6
22	ENDPLATE - REAR	3020-006	1	45	DRAIN VALVE	1000-490	1				
23	ROLLER BEARING	3020-008	1	46	OIL RESERVOIR	1000-249	1				



## Rebuild Kits

**Moro**



**Fruitland**



**Whether you wish to rebuild your vane pump yourself, or have one of our technicians rebuild it for you, we always have kits in stock to make your pump as good as new.**

**Wallenstein**



## Silencers



**Silencers come in many different sizes depending on the size of the blower on your vacuum system. Whichever size you require, we can supply.**



# Product Pumps

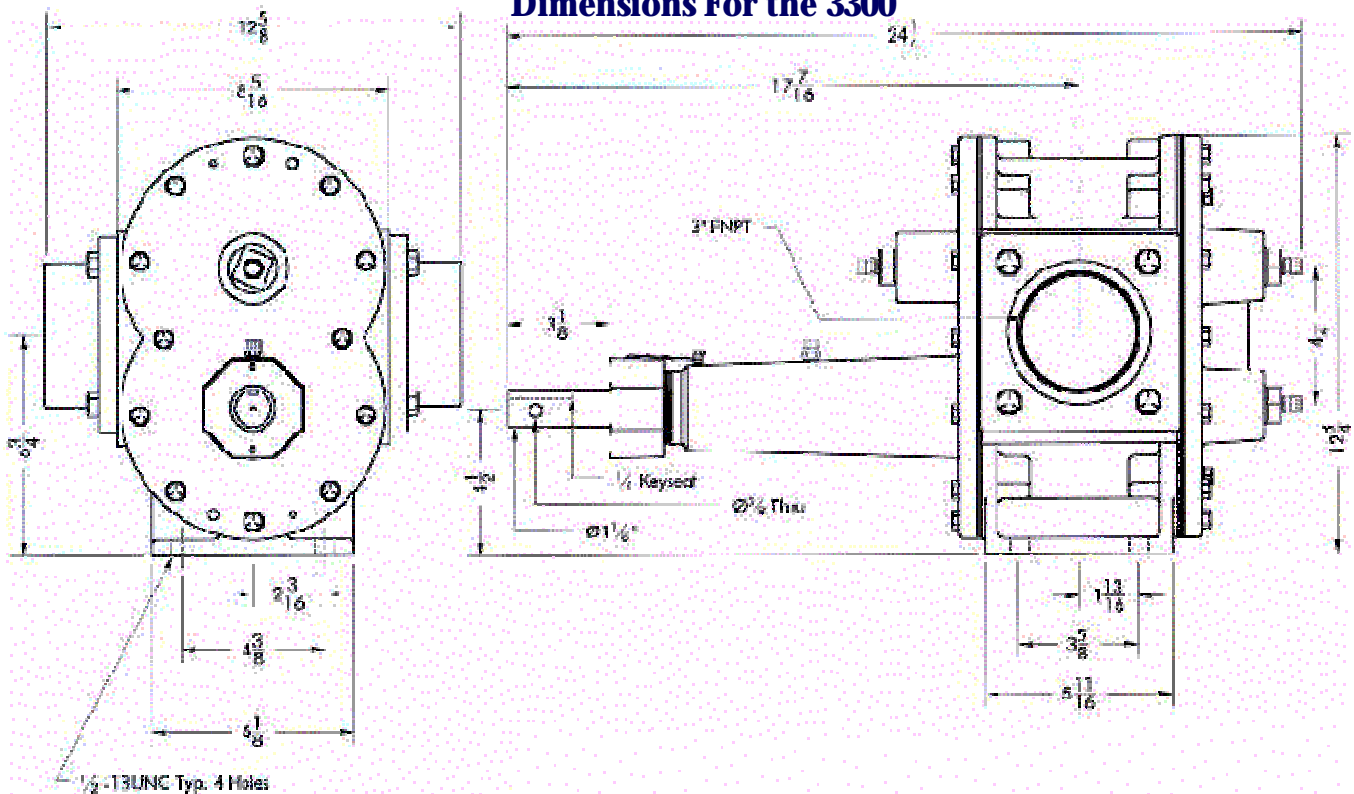
## Bowie Product

**Bowie product pumps handle most liquids from low to high viscosity, are easy to service, and are field proven. With different gears, bushings or bearings, pump sizes & shaft sizes; there is a Bowie for your application.**

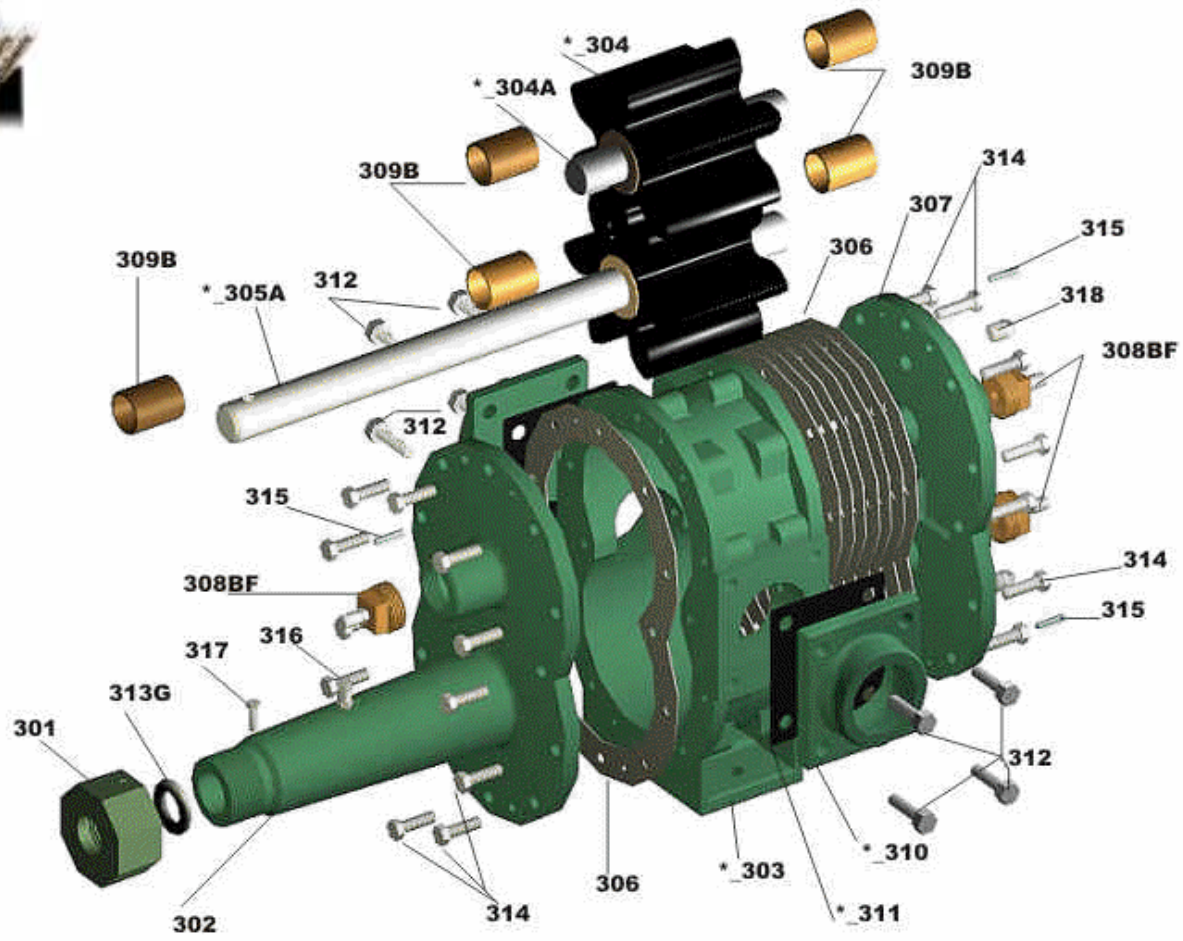


Model	Capacity GPM	Max. RPM	Max. Discharge PSI	Max. Brake HP
300 Standard	233	400	100	16.20HP
300 Extended Duty	400	600	100	16.20HP
9100 Baby Bowie	48	780	100	6.87HP

### Dimensions For the 3300







**300 Series Parts:**

No	Stock No.	Description	Qty	No	Stock No.	Description	Qty	No	Stock No.	Description	Qty	
1	301	Nut, Packing	1	8	313G	Packing, Graphite	1	*	14	303	Case, Center	1
2	302	Plate, front	1	9	314	Bolt, End Plate	24	*	15	304G	Gear, Buna-N	1
3	304K	Key, Gear	2	10	315	Pin, Tape	4	*	16	304A	Shaft, Idler	1
4	306	Gasket, Plate	8	11	316	Fitting, Grease	1	*	17	305A	Shaft, Drive	1
5	307	Plate, Back	1	12	317	Screw, Lock	1	*	18	310	Flange, Adapter	2
6	308BF	Plug, Bronze W/Grease Fig	3	13	318	Plug, Drain	2	*	19	311	Gasket, Flange	2
7	309B	Bushing, Bronze	5					*	20	312	Flange, Bolt	8

**300 Series Options:**

Stock No.	Description	Stock No.	Description	Stock No.	Description
309 BG	Bushing, Brz Grooved	337	Seat, Ball	23/33 TB	Bushings, Teflon
309 T	Bushing, Teflon	334	Nut, Bypass	* 3 SS	Stainless Steel Shafts
313 T	Packing, Teflon	23/33 BP	Plate, Bypass	* 304 BG	Bronze Gear
319	Nut, Bypass Valve	23/33 EXT	Shaft, Extension	* 304 CG	Steel Gear
330	Screw, Adj. Bypass	23/33 SS EXT	Shaft, SS Extension	* 304 UG	Urethane Gear
331	Spring, Bypass	23/33 HP	Plate, Hard Wear	* 304 V	Viton Gear
335	Seat, Spring	23/33 RK	Repair Kit	* 310A	Flange, Adapter Mounting
336	Ball, Bypass	23/33 RKT	Repair Kit Teflon	* 310 HM	Flange, Adapter for Hydro-Mulcher

\* Denotes 4 digit code number use pump size for first number



# Valves

**Vacuum Relief Valve**



**Butterfly Valve**

**Strainer  
Valve**



**Ball Valve**

**Pressure Relief Valve**



**Pneumatic Cylinder**

**Check Valve**

**Four-Way  
Valve**



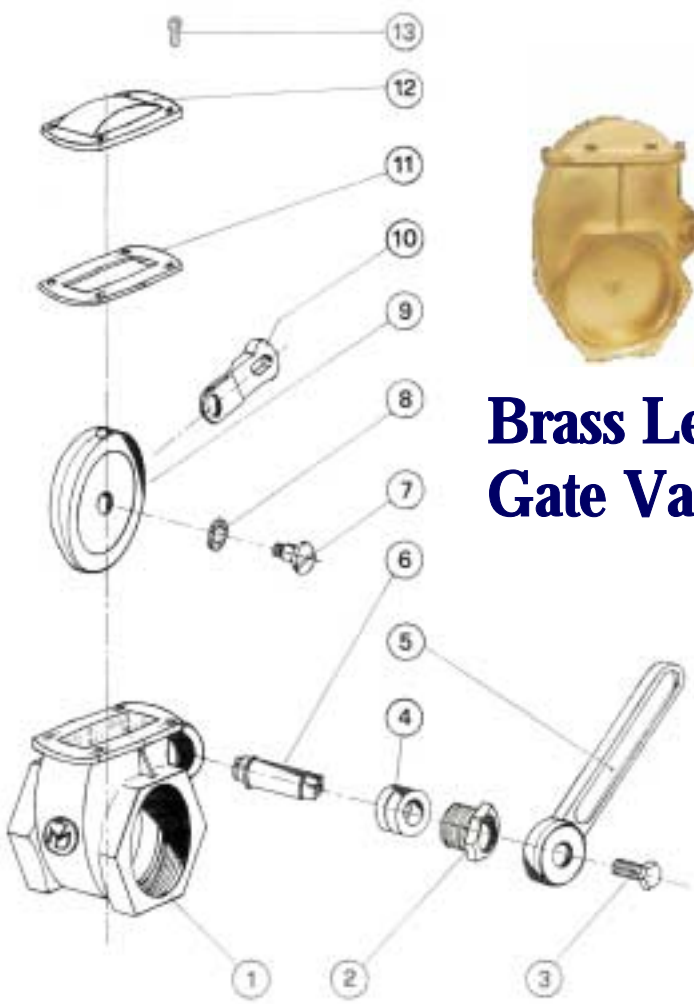
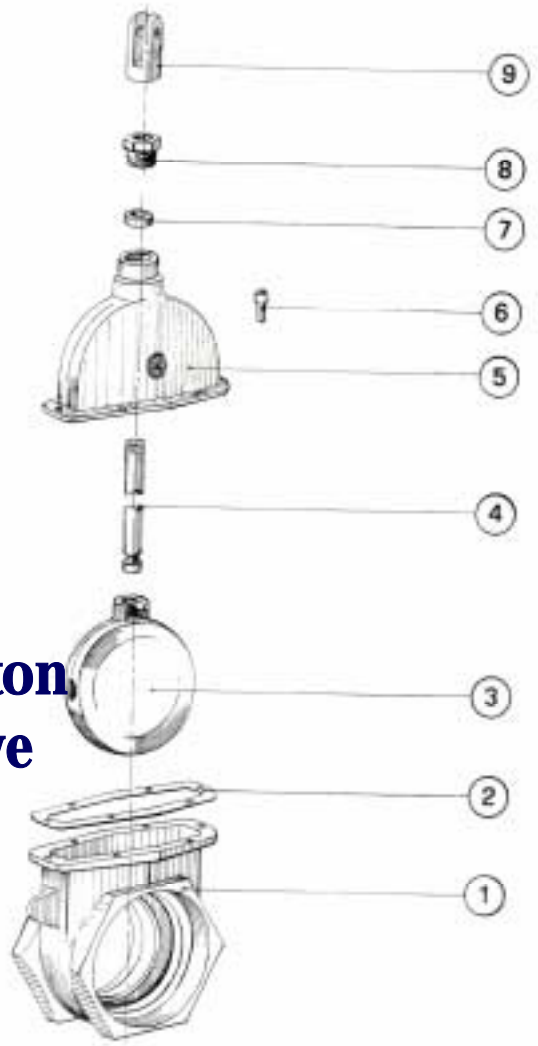
**On your truck, you're continuously having to control many factors to get the job done. Various types of valves and their actuators help with this. We carry all of the above valves in varying sizes to meet your needs.**



**Because of the nature of the vacuum truck industry and the intrinsic nature of brass being a soft metal alloy, these important valves on your truck wear out. Get all your components to rebuild your valve or replace them directly from L.M. Industries.**



**Brass Piston Gate Valve**



**Brass Lever Gate Valve**

**Valve Components**







# Hydraulics

**Hydraulic Motors**



**Hydraulic Pumps**



**Hydraulic pumps and motors come in a variety of models and sizes to suit each application. Let us know what you need, and we will accommodate**

**Hydraulic Hose & Fittings**



**Heat Exchangers**



**Flow Control Valves**



**Filters**



**Temperature & Level Indicators**



**Hydraulic Cylinders**



**Our supply of hydraulic accessories includes everything from hydraulic oil, to the heat exchanger cooling that oil, & everything in between. Give us a call for all your hydraulic needs on your vacuum truck.**





## Camlocks

From heavy duty camlocks with steel arms to the traditional brass armed option, we stock a large amount of camlocks for your truck. Ask about our line of Grizzly camlocks, designed specifically for the harsh environment vac trucks and their operators deliver. Both durability & cost effectiveness in one.



## Pipe Fittings

Whatever your pressure requirements, from 150 lb. malleable to 6000 lb. forged steel, we carry the fitting you need. Weld on pipe fittings & thin wall fittings specific to the vacuum truck industry are also available.



## Grooved Piping Products



These couplings and grooved-end fittings are commonly used to join pipe in a multitude of piping systems. They can accommodate the vacuum demand put on them by trucks in the vac & water truck industry.



# Truck Accessories



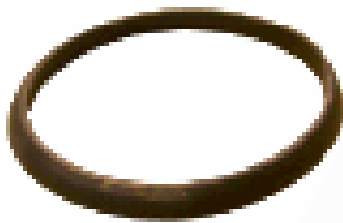
**Door Seals**



**Heat Collars**



**Oil catch  
Muffler**



**Portal Gaskets**

**Float Balls**



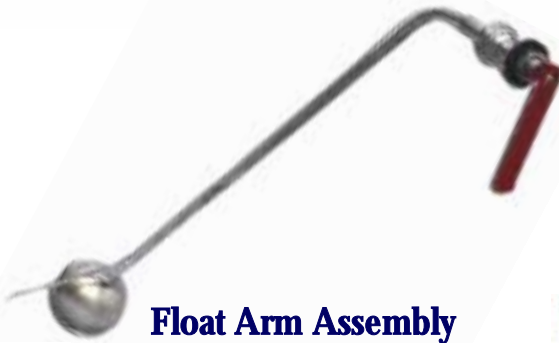
**Ball Seats**



**Sight Eyes**



**Flanges**



**Float Arm Assembly  
& Accessories**



**Pin-Wheel  
Assembly**



**Air Switch Boxes**

**Above is just a small number of the Vacuum Truck Accessories we distribute. Contact us to inquire about any part you may need for your truck.**



## Shutoffs

Shutoffs come in a variety of sizes & configurations. Primaries or secondaries, we're well stocked.



## Manways



Manways also come in differing sizes. Call for your specific needs.

## Clamps

Vac trucks utilize many different types of clamps. We stock these clamps and the tools to fasten them on.





## PTO's



Every vacuum truck is outfitted with a unique make & model of PTO. Contact us for specific application requirements.

Motors, generators, inverters, and grinders. Baldor offers a variety of industrial equipment.

## Baldor



## Gas Detection



Multi or single gas detectors, we've got what you need to stay safe while in an environment where the air quality poses a potential hazard. Air quality in the oil & gas industry is often a complex mix of toxic and flammable substances. For this, the four sensor multi gas detector is your ideal detector. At other times, you may only be concerned with one particular gas. The single gas detector is right for this





## Cyclones

**With vacuum trucks operating in so many diverse environments, the material getting moved into the truck is always different. Some of these materials get by your shutoff systems easier than others, and to keep them from entering your vacuum pump, a cyclone can be added to your truck for added protection.**



## Vibrators



**Wet, frozen, or sticky material can cling to your tank when you want to dump it. If this is the case on your truck, these compact truck vibrators are your answer.**



## Vacuum System Filters



**These filters are your pump or blowers last defense from contamination. They come in a variety of sizes & materials. 10 micron mesh will stop the smallest of particles, yet 100 micron steel is washable. Call for your individual needs.**

## Final Filter Housings

**There are a lot of differing vacuum system filters. For every filter there is a housing, tying the filter in-line with the rest of the vacuum system.**





## Composite Hose

Superior bend-radius is one benefit of our composite hose. With optional test certificates and individualized serial numbers for each hose (dependant on quantity), you can be assured of quality.



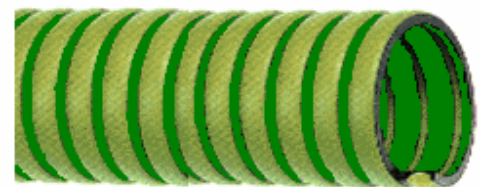
## Petroleum Hose



Petroleum hose has been a mainstay component on vacuum trucks for years. Always in stock for when you need to replace the hose on your truck.

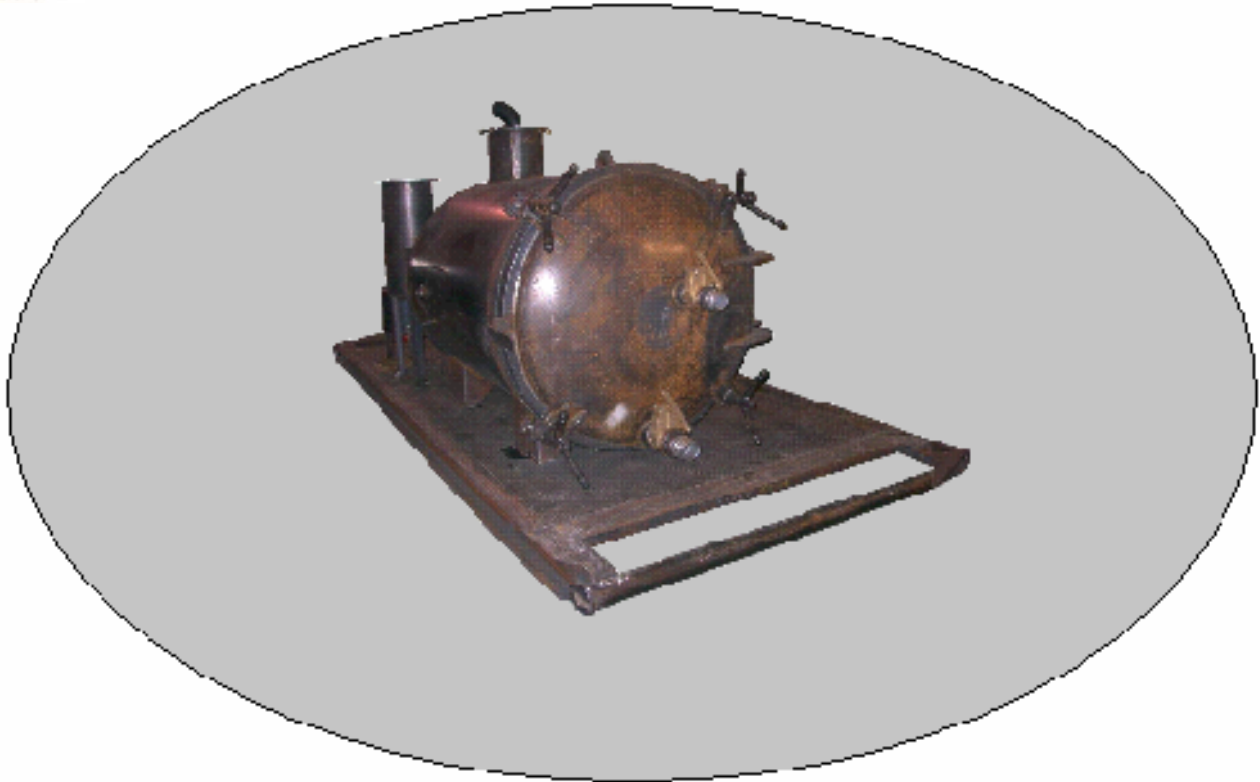
## Liquid Suction Hose

Lightweight and flexible even in low temperature. Comes in 1" to 6" sizes.





## Skid Mounted Units



**The latest innovation in the vacuum industry is available at  
L.M. Industries.**

**Our skid mounted units are custom manufactured to your specifications. We have created units for many different industries, each of whom has required differing vacuum pumps, drive motors, and skid sizes. *We are distributors for all of the components which make up the unit. This allows us to be knowledgeable not only with how the unit works as a whole, but with each component itself.* Let us know your application, and together we can manufacture a unit to suit your needs.**





**Thank-you for choosing L.M. Industries. After your purchase, you are not left alone. We stand behind our products, as we service everything we sell. Our service & manufacturing departments also pride themselves on exceptional after sale support. Rely on us as your single source for your vacuum & water truck industry needs.**