

HXL-Series II , Vacuum / Pressure Pumps

H1V

◆ Tangential Rotor Design

- Higher Airflow Efficiency.
- Less Vane Wear.
- Less Cylinder Wear.

◆ Exclusive Porting Design

- Multiple Inlet and Outlet Porting Design for Greater Ease and Plumbing Versatility.

◆ End Thrust Protection

- Prevents Rotor-to-Endcover Contact Created by Direct P.T.O. Drive or Misaligned Belt Driven Systems.

◆ Double End Shaft

- Accommodates Clockwise or Counter-Clockwise Drive Systems.

◆ Integral Valve

- Allows Pump to Operate in Vacuum and Pressure Mode.
- Reduces Plumbing and Installation Costs.



◆ Masport Quality & Performance

- Achieve Minimum 27" Hg (Intermittent).
- Bolt on Half Shafts.
- Precise Machining and Assembly.
- Heavy Duty Bearings.
- Viton Oil Seals for Longer Service Life.
- Kevlar Vanes are Heat Stabilized and Machined with Exacting Tolerances for Superior Ruggedness and Durability.
- Easy to Service.
- Superior Pump Life.

◆ Performance Warranty

- One Year Warranty.

PERFORMANCE DATA

Performance Data – Vacuum

Pump R.P.M.	Displacement C.F.M.	S.C.F.M. and A.C.F.M. @ VACUUM											Maximum Vacuum – “Hg	
		5	10	15	18	20	22	24	25	26	27	Continuous	Intermittent	
1250	19	SCFM	15	12	9	6	5	4	3	2	1.3	0.8	20	27
		ACFM	18	18	17	16	15	14	13	12	10	8		
1425	23	SCFM	17	14	10	8	6	4	3	2	2	1	20	27
		ACFM	21	20	20	19	18	17	16	14	12	10		
1750	30	SCFM	23	18	13	10	8	6	5	4	3	1.7	20	27
		ACFM	28	27	27	26	25	24	23	22	20	17		

Performance Data – Pressure

Pump R.P.M.	Displacement C.F.M.	S.C.F.M. @ P.S.I.G.							Maximum Pressure – P.S.I.G.	
		2	4	5	8	10	12	15	Continuous	Intermittent
1250	19	18	18	17	17	16	16	15	15	15
1425	23	22	21	21	20	20	19	19	15	15
1750	30	28	27	26	26	25	25	24	15	15

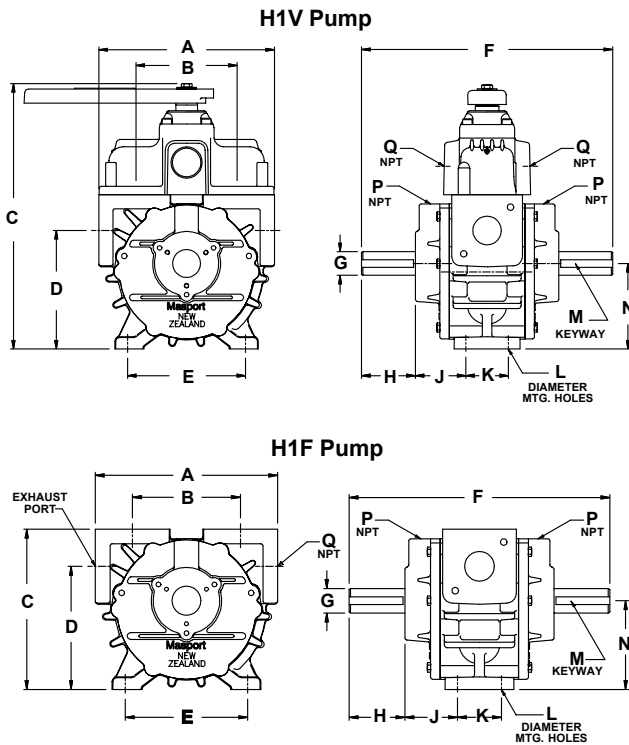
Horsepower Required @ “Hg

Pump R.P.M.	Vacuum “Hg		
	15	20	27
1250	0.9	1.0	1.2
1425	1.0	1.2	1.4
1750	1.3	1.5	1.8

Horsepower Required @ P.S.I.G.

Pump R.P.M.	P.S.I.G.		
	5	10	15
1250	0.9	1.3	1.6
1425	1.0	1.5	1.8
1750	1.2	1.9	2.2

DIMENSIONAL DATA



	H1V	H1F
A	7 11/32	7 11/32
B	4 11/32	4 11/32
C	11 1/16	6 7/16
D	4 15/16	4 15/16
E	4 15/16	4 15/16
F	10 15/32	10 15/32
G	25mm	25mm
H	2 7/32	2 7/32
J	2 1/8	2 1/8
K	1 25/32	1 25/32
L	13/32	13/32
M	7mm x 8mm x 1 3/8"	7mm x 8mm x 1 3/8"
N	3 9/16	3 9/16
P	1/4	1/4
Q	1	1

ALL DIMENSIONS IN INCHES UNLESS STATED OTHERWISE.

For additional information on these quality Masport Vacuum / Pressure Pumps contact:



MASPORT INCORPORATED

6140 McCormick Drive
 Lincoln, Nebraska 68507
 402-466-8428 FAX: 402-466-8355
 E-Mail: masport.sales@alltel.net

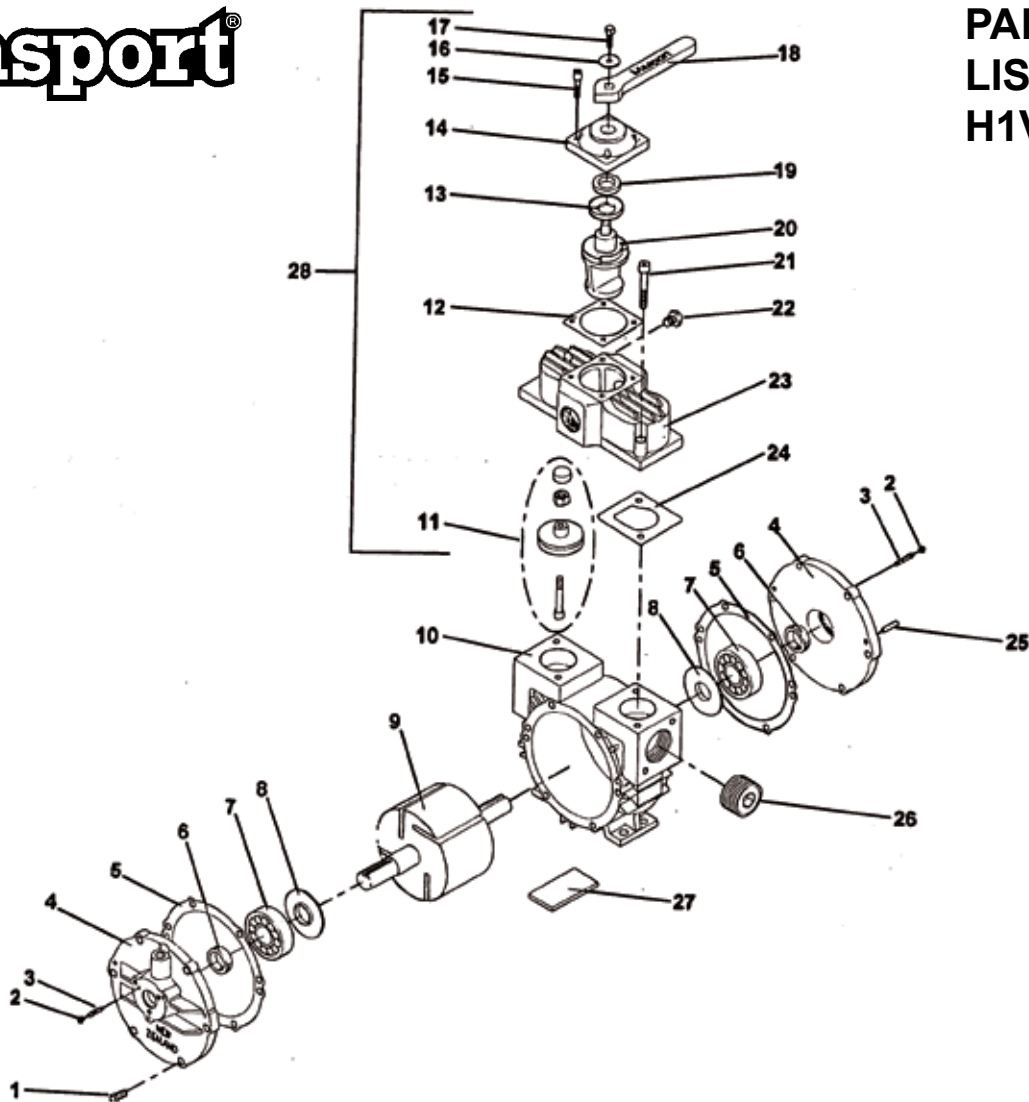
www.masportpump.com

CALL TOLL FREE 800-228-4510



Masport®

PARTS LIST H1V



H1V AIR COOLED VACUUM / PRESSURE PUMP PARTS LIST (968120)

Ref	Description	Part No.	Qty.	Ref	Description	Part No.	Qty.
1	Bolt	501848	12	12	Gasket	568098	1
2	Nut	220221	6	13	Washer	568096	2
3	Set Screw	503225	6	14	Cap	968103	1
4	Endcover	968109	2	15	Cap Screw	568064	4
#	Endcover Plug (Single End)	975132	1	16	Washer	503196	5
5	Endcover Shim Gasket .001" Thickness	575023	*	17	Bolt	501702	1
	.002" Thickness	575024	*	18	Handle	968099	1
6	Oil Seal	501573	2	19	Oil Seal	504282	1
7	Bearing	501574	2	20	Spool	968102	1
8	Bearing Spacer	975109	2	21	Cap Screw	568186	4
9	Rotor Assembly (Includes 7, 8)	968154	1	22	Plug	143901	1
#	Rotor Assembly (Single End)	968192	1	23	Valve Body	968101	1
10	Cylinder	968111	1	24	Gasket	568188	2
11	NRV Poppet Assembly	968189	1	25	Plug	501679	2
				26	Dowel Pin	575111	4
				27	Vane Pack (4)	968217	1
				28	Integral Valve Assembly (Incl. 11,12,13,14,15,16, 17,18,19, 20, 22, 23)	968191	1

* QUANTITY VARIES.

NOT SHOWN